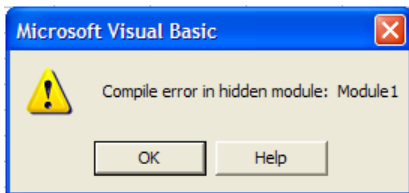


## Summary

This document will show you how to send data from an IMPACT device and have it populate cells in a Microsoft Excel worksheet. This involves using a VPM Composite Tool called *Send Data to Excel* and then adding an Add-in to Excel to auto-configure the communication and populating of the incoming data.

NOTE: The most recent version of this add-in fixes a problem caused by a Microsoft Excel update. If you received the following error when you tried to run the add-in after updating Excel, you must remove the existing add-in and install the new version.

### The error message



### To remove the existing add-in

1. Search your PC for files with an “exd” extension (\*.exd). Be sure to search all hidden files and folders.
2. Delete the files that have an “exd” extension.
3. Proceed with the installation instructions that follow.

## Setup

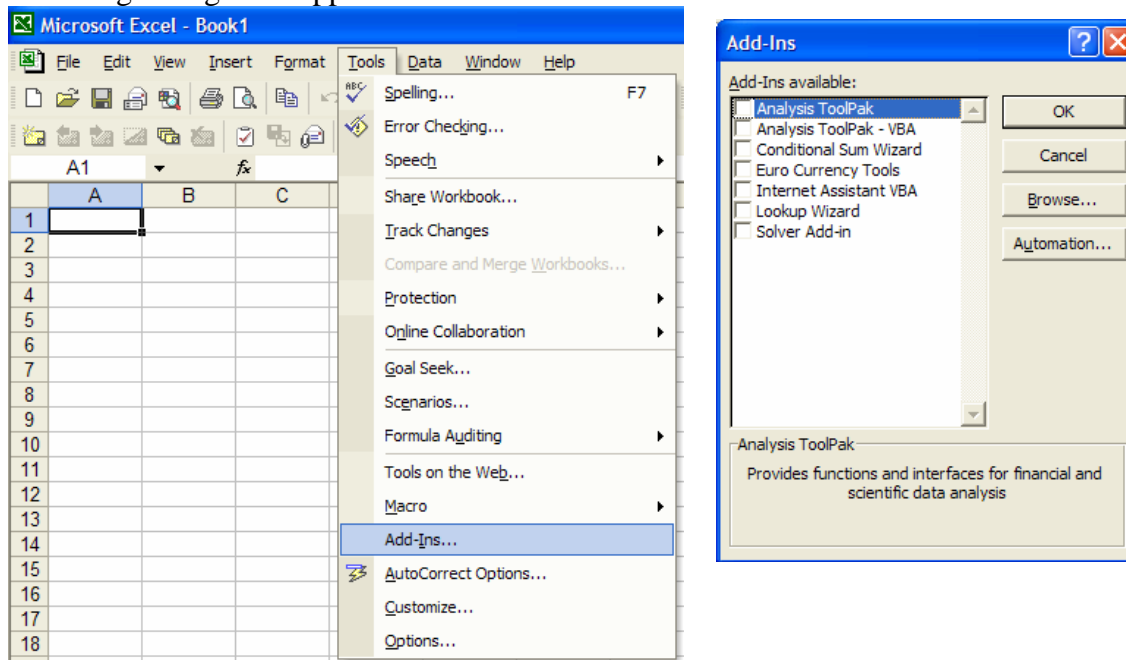
### Install IMPACT Data on PC

Run the Setup.exe install program to place the following files on your system.

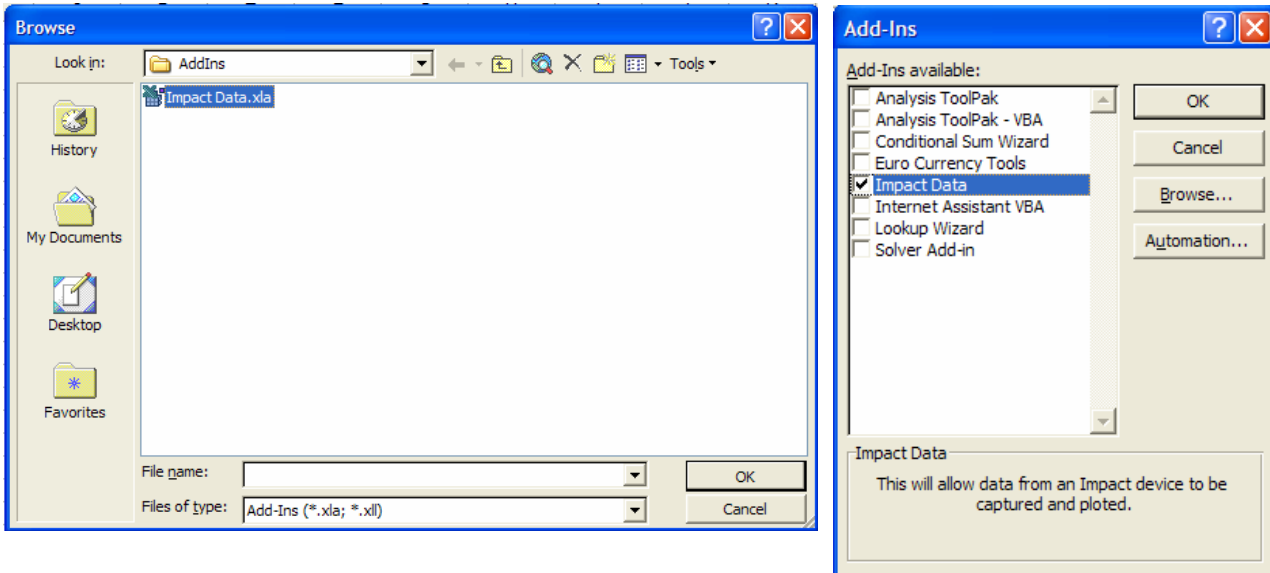
Impact Data.xla -This is an Excel Add-in

Log to Excel.tool -This is a VPM Composite Tool

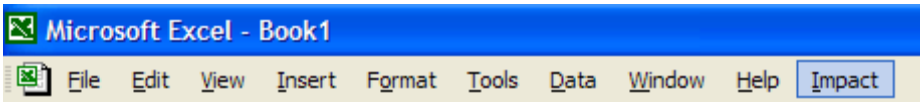
After the installer has completed, open Excel and select the *Add-ins* under the *Tools* menu. The following dialogs will appear.



Click the *Browse* button and point to the folder  
c:\Program Files\ImpactExcelData  
Select the file *Impact Data.xla*. Then select *OK*.



You will now find a new item called *IMPACT* in the menu bar.

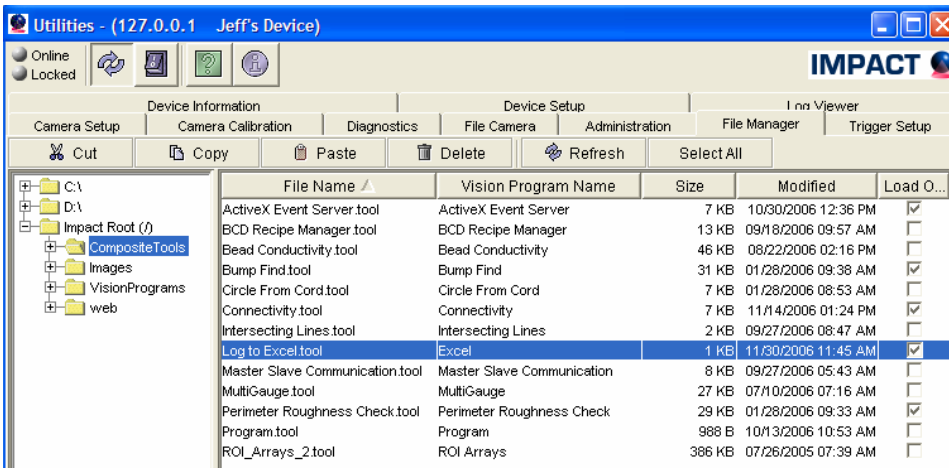


**Copy the Tool File to your Device:**

Under the File Manager tab, within VPM's Utilities, point to the folder  
c:\Program Files\ImpactExcelData

Select the composite tool called *Log to Excel.tool*.

Select this, then select Copy, then select the Composite Tools folder on your Device, then select Paste. Check the *Load on Startup* for this file, close Utilities, and restart your Device/Emulator.



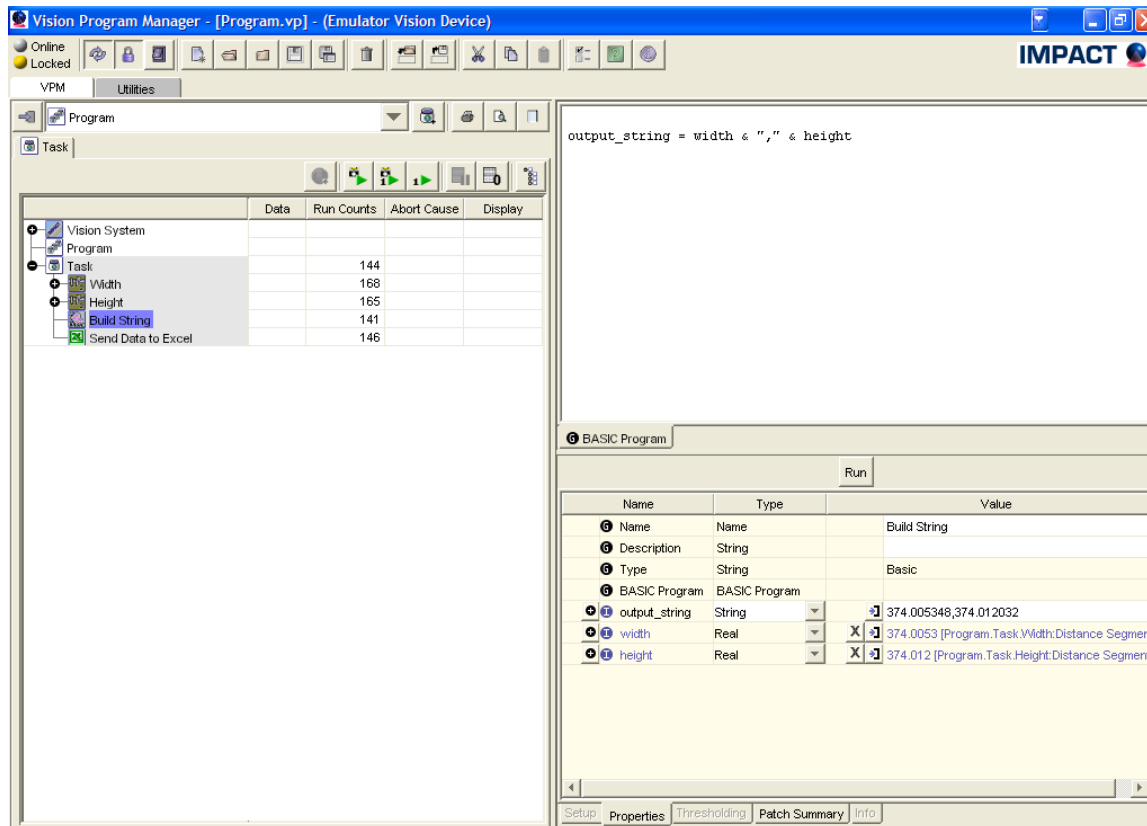
After your Device/Emulator has restarted, you will find a new folder in the tool pallet called *Excel*, along with a new Composite Tool called *Send Data to Excel*. You will use this tool to send a delimited

string to Excel and have it place this data into separate columns. Each run of the tool will place data into the next row on the worksheet.

### Sample Project

If you seek a single string of data, then simply patch the desired string into the *Send Data into Excel* tool's *Data for Excel* Input property. If you seek multiple strings of data, this string must first be formatted in a BASIC tool, with each variable patched to the proper data source.

Here is an example of simple application where width and height measurement strings were formatted. Note the BASIC tool reads: `output_string = width & "," & height`



To start sending data into Excel, enable on-line triggering on your Device/Emulator, then in Excel, select *Connect* from the *IMPACT* menu.

Enter in the complete IP address of the Device/Emulator.

Select *Connect*. View the connection status display in the lower left corner of Excel to show when a connection is reached.

Select *Chart* under the *IMPACT* menu, and select *Show Data on Sheet1*. This will start the collection and displaying of data. Please review the other options under the *Settings* and *Chart* menus to control the amount of data as well as charting options.