



Revision History

Date	Version	Description	Author
12-01-06	1.0	Initial Version.	Jeff Banister

Summary

This document will show you how to send data from an IMPACT device and have it populate cells in a Microsoft Excel worksheet. This involves using a VPM Composite Tool called *Send Data to Excel* and then adding in an Add-in to Excel to auto-configure the communication and populating of the incoming data.

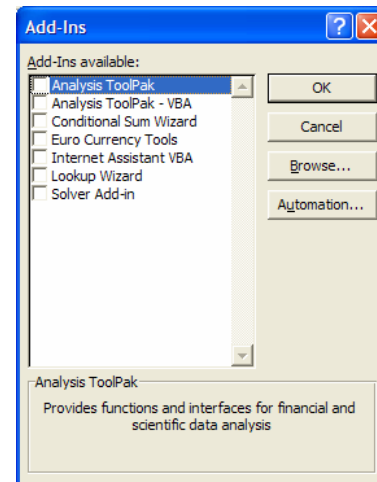
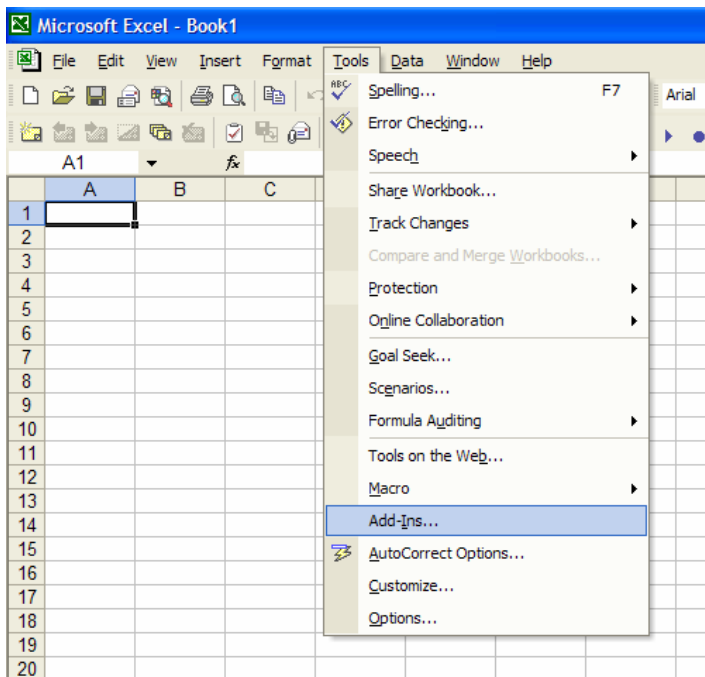
Setup

**Install Impact Data on PC:**

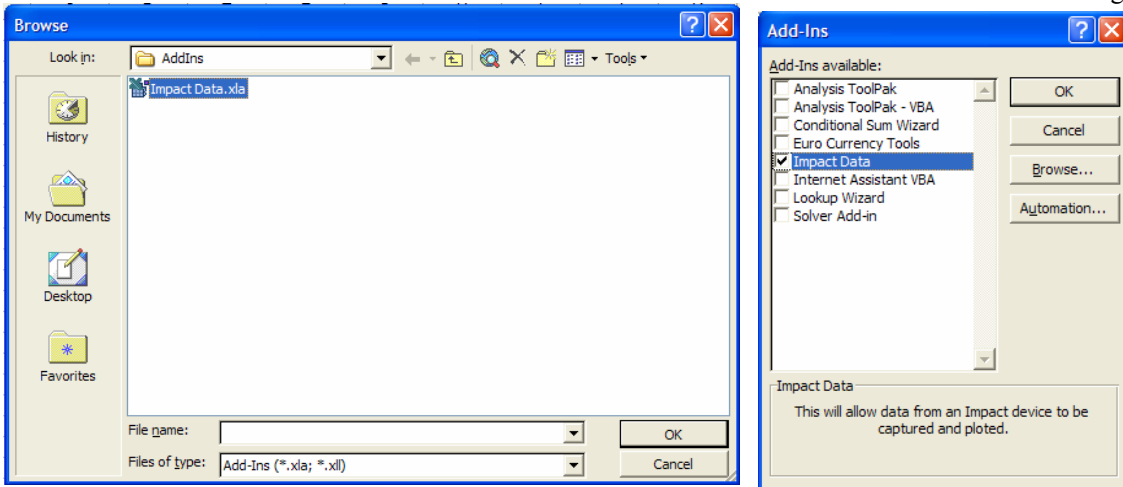
Run the Setup.exe install program to place the following files on your system.

- Impact Data.xla - This is an Excel Add-in
- Log to Excel.tool - This is a VPM Composite Tool

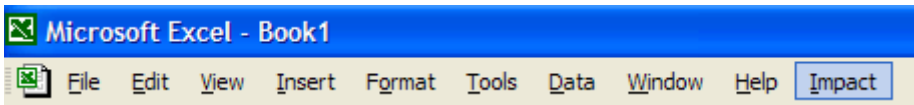
After the installer has completed, open Excel and select the *Add-ins* under the *Tools* menu. The following dialogs will appear.



Press the *Browse* button, point to the c:\Program Files\ImpactExcelData folder, and select the file *Impact Data.xla*. Then select *OK*.

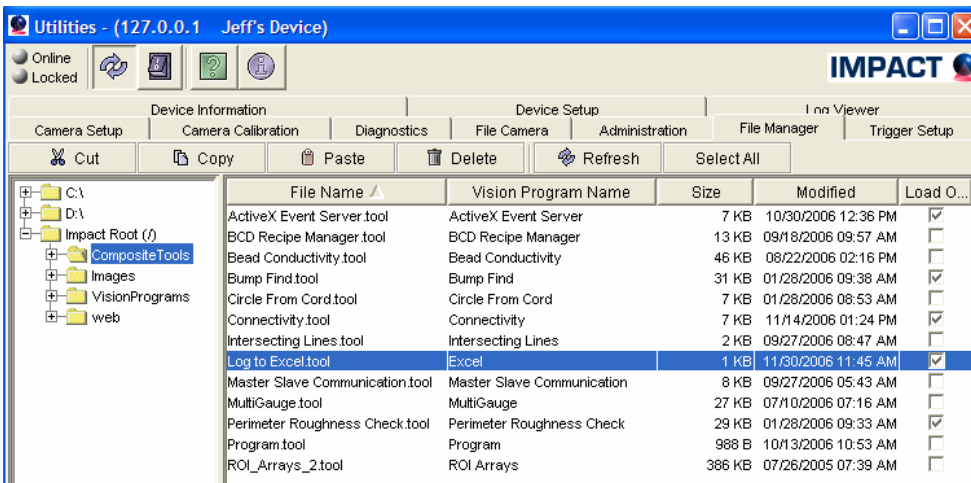


You will now find a new item called *Impact* in the menu bar.



**Copy the Tool File to your Device:**

Under the File Manager tab within VPM's Utilities, point to the c:\Program Files\ImpactExcelData folder, and select the composite tool called *Log to Excel.tool*. Select this, then select Copy, then select the Composite Tools folder on your Device, then select Paste. Check the *Load on Startup* for this file, close Utilities, and restart your Device/Emulator.



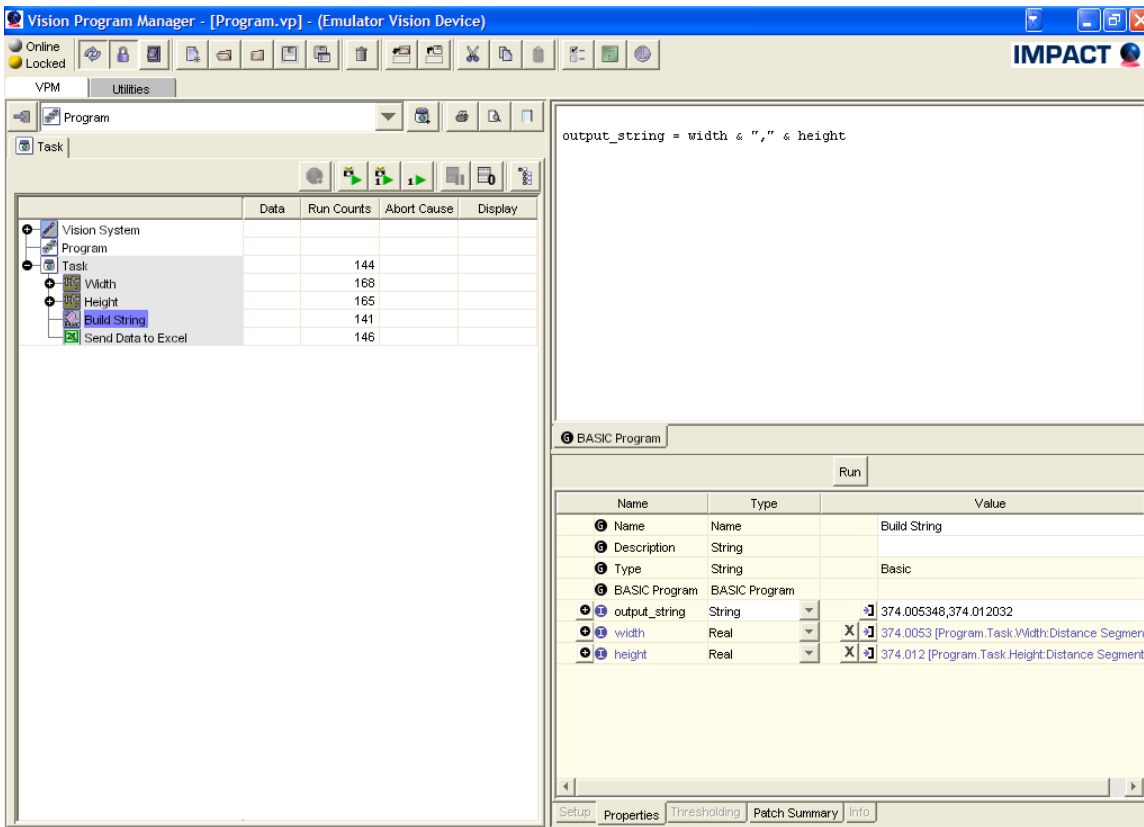
After your Device/Emulator has restarted, you will find a new folder in the tool pallet called *Excel*, along with a new Composite Tool called *Send Data to Excel*. You will use this tool to send a delimited string to Excel and have it place this data into separate columns. Each run of the tool will place data into the next row on the worksheet.



### Sample Project

If you seek a single string of data, then simply patch the desired string into the *Send Data into Excel* tool's *Data for Excel* Input property. If you seek multiple strings of data, this string must first be formatted in a BASIC tool, with each variable patched to the proper data source.

Here is an example of simple application where a width and height measurement strings where formatted. Note the BASIC tool reads: `output_string = width & "," & height`



To start sending data into Excel, simply enable on-line triggering on your Device/Emulator, then in Excel, select the *Connect* from the *Impact* menu. Then enter in the complete IP address of the Device/Emulator, then select *Connect*. View the connection status display in the lower left corner of Excel to show when a connection is reached. Then select *Chart* under the *Impact* menu, and select *Show Data on Sheet1*. This will start the collection and displaying of data. Please review the other options under the *Settings* and *Chart* menus to control the amount of data as well as charting options.